



MONTHLY MEMBERSHIP PROGRESS REPORT

District 322C3

Results as of: 10/31/2018

GMT: SWADESH RANJAN SAHA

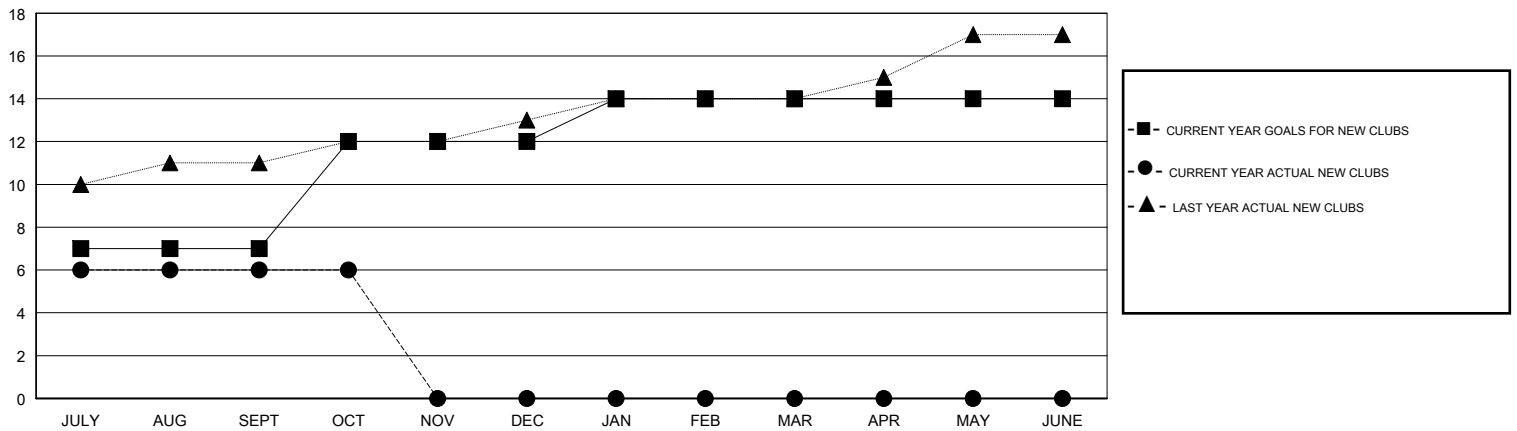
LOCATION INDIA

GMT CA

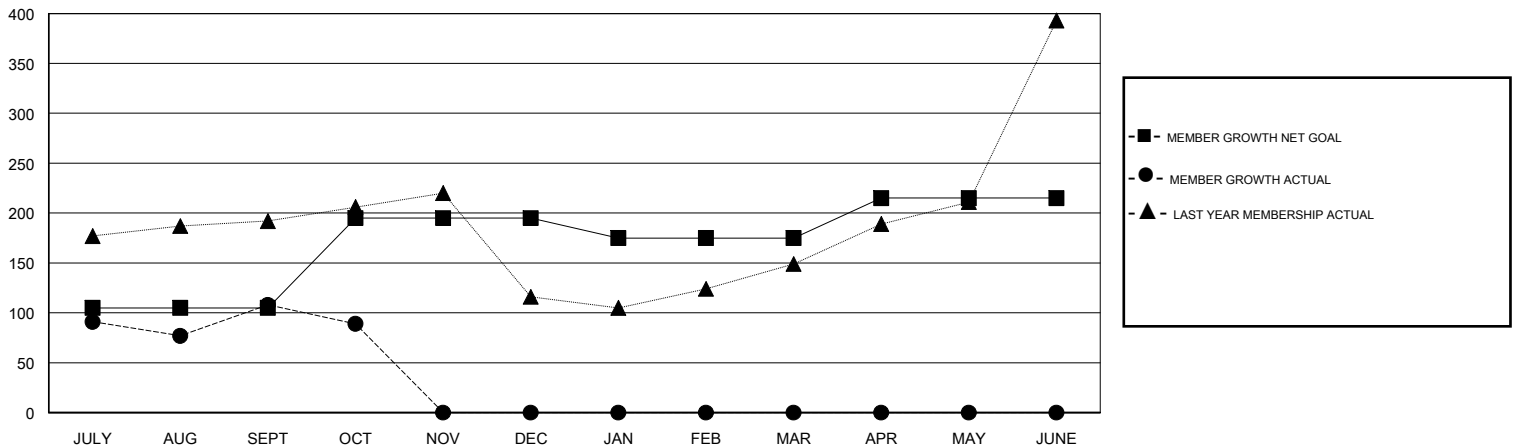
| Clubs | | | |
|-----------------------|---------------|-----------|---------------|
| RESULTS FOR 2018-2019 | | | |
| QUARTER | NEW CLUB GOAL | NEW CLUBS | DROPPED CLUBS |
| JULY/AUG/SEPT | 7 | 6 | 2 |
| OCT/NOV/DEC | 5 | 0 | 1 |
| JAN/FEB/MAR | 2 | 0 | 0 |
| APR/MAY/JUNE | 0 | 0 | 0 |

| Members | | | |
|-----------------------|------------------------|----------------------|--|
| RESULTS FOR 2018-2019 | | | |
| QUARTER | MEMBER GROWTH NET GOAL | MEMBER GROWTH ACTUAL | DROPPED MEMBERS ACTUAL (including transfers) |
| JULY/AUG/SEPT | 105 | 250 | 132 |
| OCT/NOV/DEC | 90 | 22 | 40 |
| JAN/FEB/MAR | -20 | 0 | 0 |
| APR/MAY/JUNE | 40 | 0 | 0 |

GOALS AND ACTUAL NEW CLUBS CUMULATIVE



GOALS AND ACTUAL MEMBERS CUMULATIVE



| | | | |
|------------------|---|--|----------------|
| DROPPED CLUBS: 3 | 37 CLUBS OF 114 ADDED 1 OR MORE NEW MEMBERS | <u>GENDER DISTRIBUTION</u> | |
| DROPPED MEMBERS | | MALE | 2,912 (73.65%) |
| DECEASED | 9 | FEMALE | 1,042 (26.35%) |
| CLUB CANCELLED | 74 | Women Percentage Fiscal Year Goal: 26% | |
| OTHER | 89 | TOTAL FAMILY UNIT MEMBERS | 2,626 |
| TOTAL | 172 | FAMILY MEMBERS PAYING HALF DUES | 1,644 |

[CLICK HERE FOR CUMULATIVE MEMBERSHIP DATA](#)